



# HHGM Insights – Diagnosis and Questionable Encounters

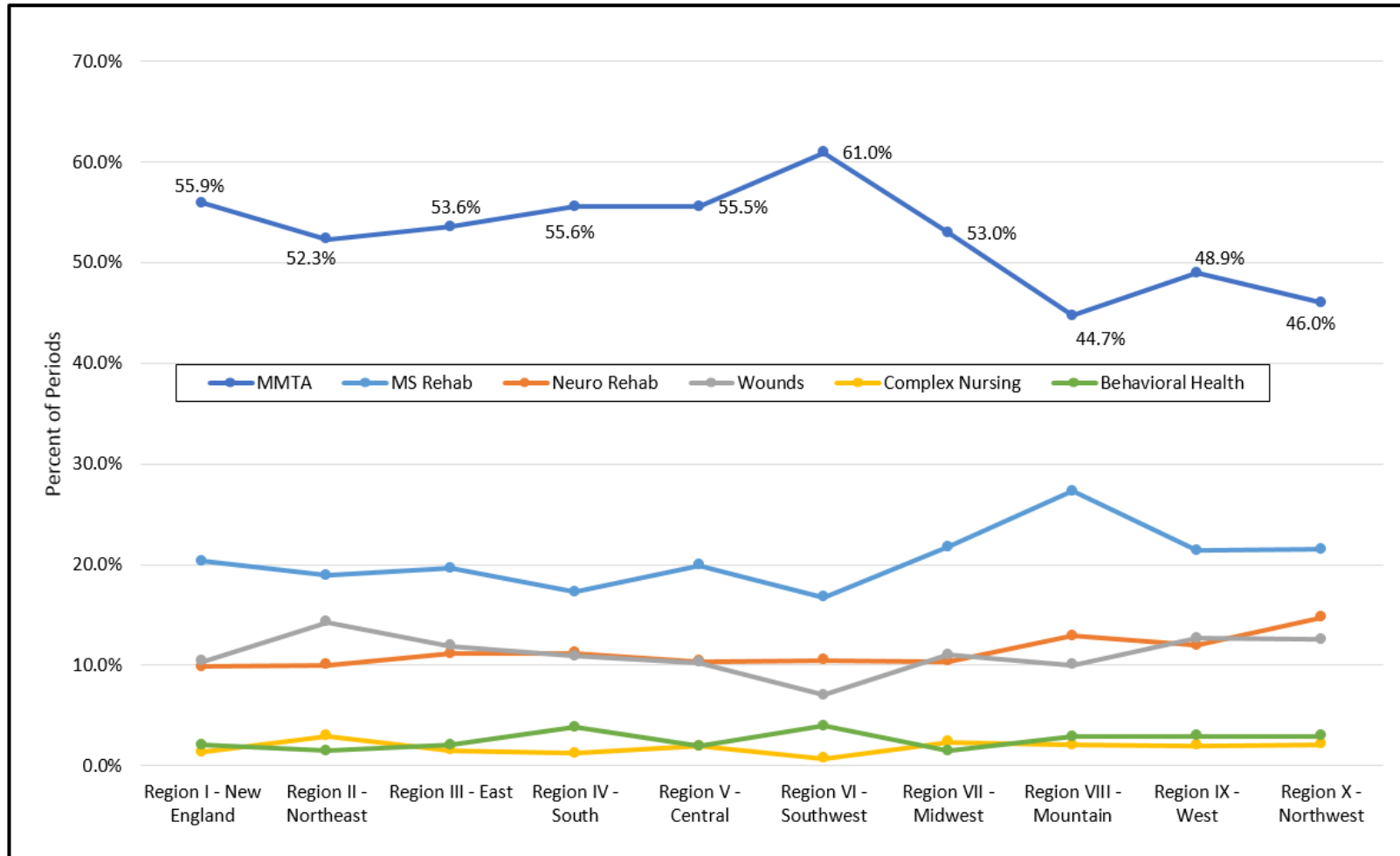
**Chris Attaya**

VP of Product Strategy, SHP

HHFMA Call with the Experts – March 20th, 2018

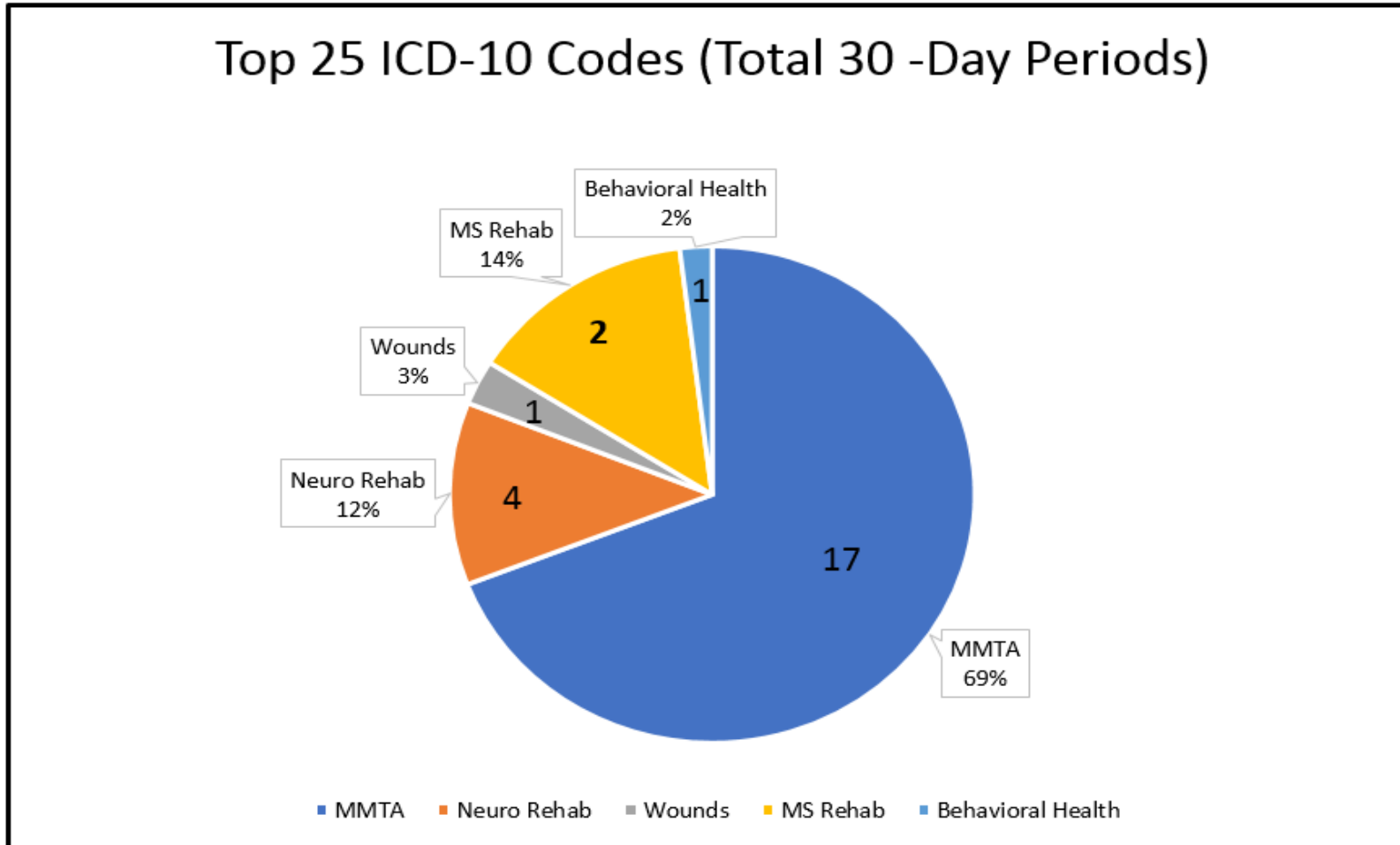
# Primary Diagnosis maps to Clinical Group

- ▶ Percent of HHGM 30-day periods by CMS Region



# Top 25 ICD-10 Primary Diagnosis Codes

- ▶ Percent of HHGM 30-day periods by CMS Region

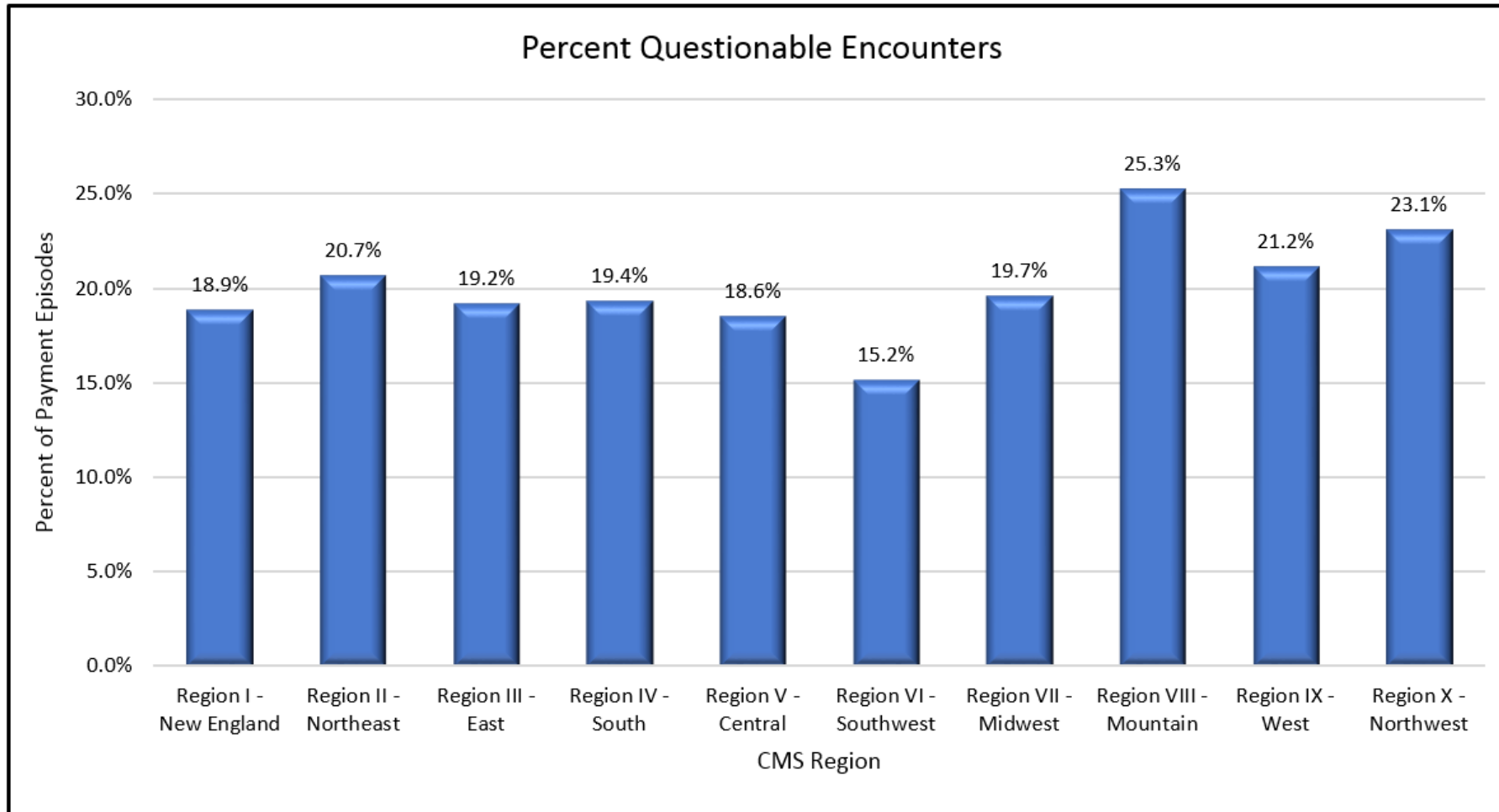


# Top 25 ICD-10 Primary Dx Codes

ICD Code	ICD Description	Clinical Group	# of Periods
Z47.1	Aftercare following joint replacement surgery	MS Rehab	202,893
I11.0	Hypertensive heart disease with heart failure	MMTA	167,012
I10.	Essential (primary) hypertension	MMTA	140,866
I13.0	Hyp hrt & chr kdny dis w hrt fail and stg 1-4/unsp chr kdny	MMTA	124,604
J44.1	Chronic obstructive pulmonary disease w (acute) exacerbation	MMTA	122,905
J44.9	Chronic obstructive pulmonary disease, unspecified	MMTA	114,861
Z48.812	Encntr for surgical aftcr following surgery on the circ sys	MMTA	88,877
G20.	Parkinson's disease	Neuro Rehab	79,023
E11.9	Type 2 diabetes mellitus without complications	MMTA	68,437
I87.2	Venous insufficiency (chronic) (peripheral)	MMTA	66,654
Z47.89	Encounter for other orthopedic aftercare	MS Rehab	59,749
E11.621	Type 2 diabetes mellitus with foot ulcer	Wounds	54,198
Z48.3	Aftercare following surgery for neoplasm	MMTA	53,908
I69.354	Hemiplga following cerebral infrc affecting left nondom side	Neuro Rehab	53,866
I69.351	Hemiplga following cerebral infrc aff right dominant side	Neuro Rehab	52,088
Z48.815	Encntr for surgical aftcr following surgery on the dgstv sys	MMTA	49,713
E11.22	Type 2 diabetes mellitus w diabetic chronic kidney disease	MMTA	49,661
I48.91	Unspecified atrial fibrillation	MMTA	48,722
I12.9	Hypertensive chronic kidney disease w stg 1-4/unsp chr kdny	MMTA	43,366
J18.9	Pneumonia, unspecified organism	MMTA	42,496
E11.65	Type 2 diabetes mellitus with hyperglycemia	MMTA	39,117
F03.90	Unspecified dementia without behavioral disturbance	Behavioral Health	36,894
G30.9	Alzheimer's disease, unspecified	Neuro Rehab	36,698
J44.0	Chronic obstructive pulmon disease w acute lower resp infct	MMTA	34,472
I25.10	Athscl heart disease of native coronary artery w/o ang pctrs	MMTA	31,311
<b>Total</b>			<b>1,862,391</b>

# Questionable Encounters (QE)

- ▶ SHP National Average was 19.0%



# Top 20 QEs by ICD-10 Code

- ▶ Begin to address diagnostic codes that would be questionable

ICD Code	ICD Description	Primary Diagnosis Category	QE's	% of Total
M62.81	Muscle weakness (generalized)	Musculoskeletal/Connective Tissue	95,153	17.2%
N39.0	Urinary tract infection, site not specified	Genitourinary	43,502	7.9%
Z46.6	Encounter for fitting and adjustment of urinary device	Factors Influencing Status/Sup Class	38,567	7.0%
R26.89	Other abnormalities of gait and mobility	Symptoms/Signs/III-Defined	22,956	4.1%
R26.81	Unsteadiness on feet	Symptoms/Signs/III-Defined	14,095	2.5%
R53.1	Weakness	Symptoms/Signs/III-Defined	12,951	2.3%
R29.6	Repeated falls	Symptoms/Signs/III-Defined	12,600	2.3%
R26.9	Unspecified abnormalities of gait and mobility	Symptoms/Signs/III-Defined	11,760	2.1%
S72.001D	Fx unsp part of nk of r femr, subs for clos fx w routn heal	Injury/Poisoning	10,554	1.9%
S72.002D	Fx unsp part of nk of l femr, subs for clos fx w routn heal	Injury/Poisoning	10,413	1.9%
I13.2	Hyp hrt & chr kdny dis w hrt fail and w stg 5 chr kdny/ESRD	Circulatory - Hypertension	10,162	1.8%
R26.2	Difficulty in walking, not elsewhere classified	Symptoms/Signs/III-Defined	8,079	1.5%
I12.0	Hyp chr kidney disease w stage 5 chr kidney disease or ESRD	Circulatory - Hypertension	6,128	1.1%
M19.90	Unspecified osteoarthritis, unspecified site	Musculoskeletal/Connective Tissue	5,701	1.0%
M19.91	Primary osteoarthritis, unspecified site	Musculoskeletal/Connective Tissue	5,641	1.0%
M06.9	Rheumatoid arthritis, unspecified	Musculoskeletal/Connective Tissue	5,228	0.9%
S81.801D	Unspecified open wound, right lower leg, subs encntr	Injury/Poisoning	5,010	0.9%
S81.802D	Unspecified open wound, left lower leg, subsequent encounter	Injury/Poisoning	4,943	0.9%
C34.90	Malignant neoplasm of unsp part of unsp bronchus or lung	Neoplasms	4,881	0.9%
Z91.81	History of falling	Factors Influencing Status/Sup Class	4,712	0.9%
Top 20 Codes			333,036	60.1%
Grand Total			554,011	100.0%